



**ZIPPITY**  
*Easy Does It!*

**KESWICK**  
VINYL PRIVACY  
FENCE AND SCREEN  
KIT 2-PACK  
(44 1/8" H X 42" W)

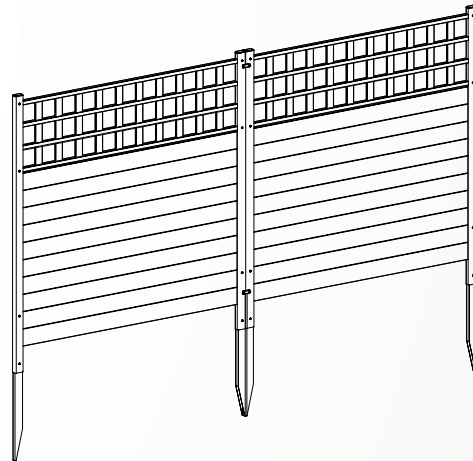
**60 MIN**

*Approximate assembly time for 2 panels*

Want to see a video on how to  
assemble this product?  
**Scan the QR code**



**ASSEMBLY**  
INSTRUCTIONS  
ZP19060



## GENERAL INFORMATION



### IMPORTANT

- + Check the inside of the larger pieces in your box for other materials packed inside.
- + When assembling components, place on a non-abrasive surface (i.e. shipping box) to avoid scratching.
- + We recommend an area approximately 5'x 8' for unobstructed assembling.
- + You should not need to use excessive force when assembling components.

## MISSING OR DAMAGED PARTS?

### VISIT OUR WEBSITE FIRST, SO WE CAN HELP YOU RIGHT AWAY!

Although great care has been taken to ensure proper packaging and handling of this product, occasionally problems occur. If you discover any missing, damaged or defective parts, please visit our website to order replacement parts. If you experience any further trouble with your product, please contact our customer service department.

 [parts.nychbrands.com](http://parts.nychbrands.com)

 [support@zippity-outdoor.com](mailto:support@zippity-outdoor.com)

 **704-892-5222 / 877-234-6196**

*Customer service agents are available to take calls weekdays from 9am-5pm EST. If you call outside of business hours, please leave a voicemail.*

To help you quickly and accurately, please have reference item number **ZP19060** and the specific part name which can be found on page 4. It is helpful if you can provide the batch lot which is a stamped number on the inside of the box.

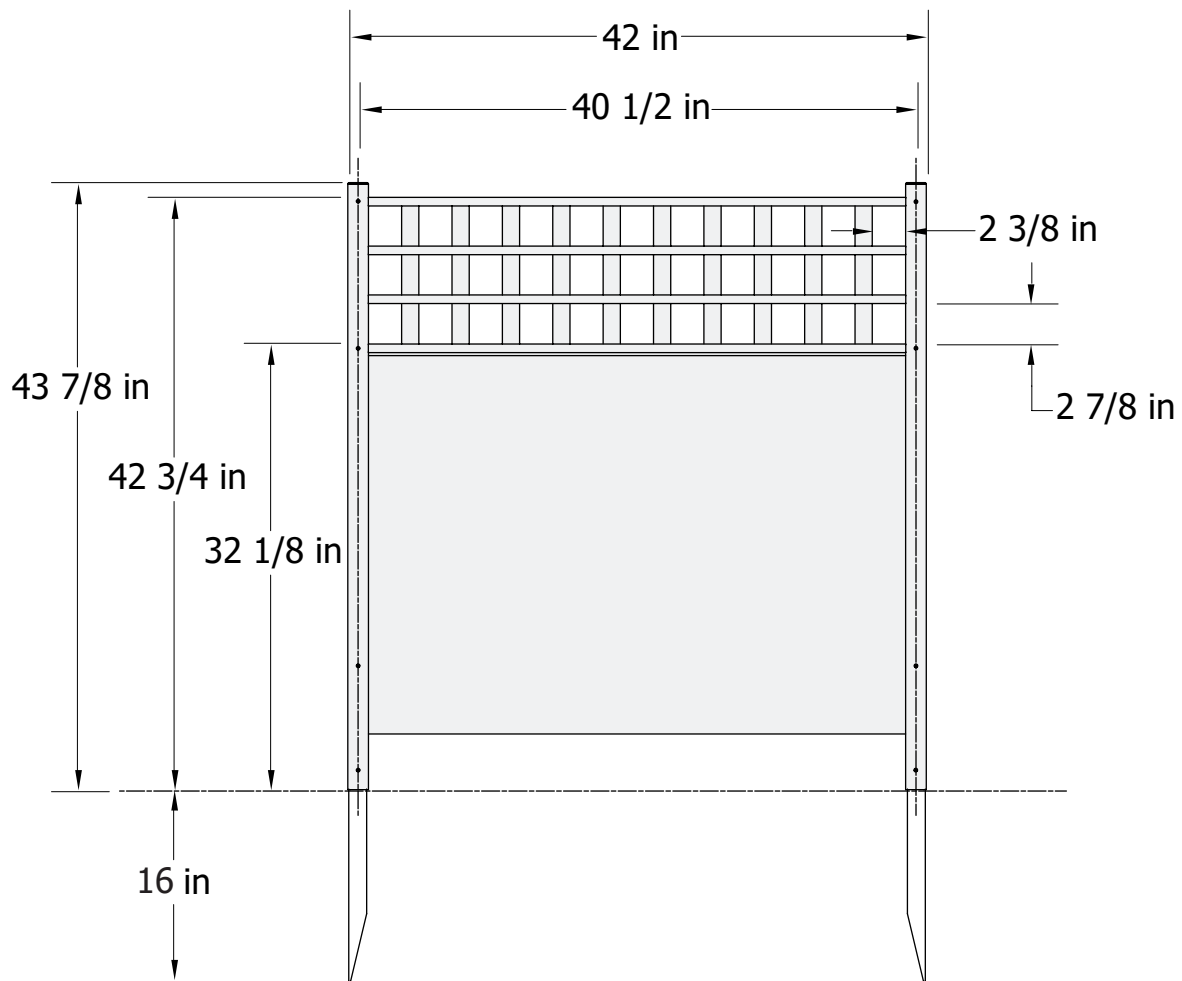
## NEED ASSEMBLY HELP?

If you are having problems with the assembly or installation of this product, we are happy to assist you with the process, **so please give us a call at 704-892-5222 / 877-234-6196.**

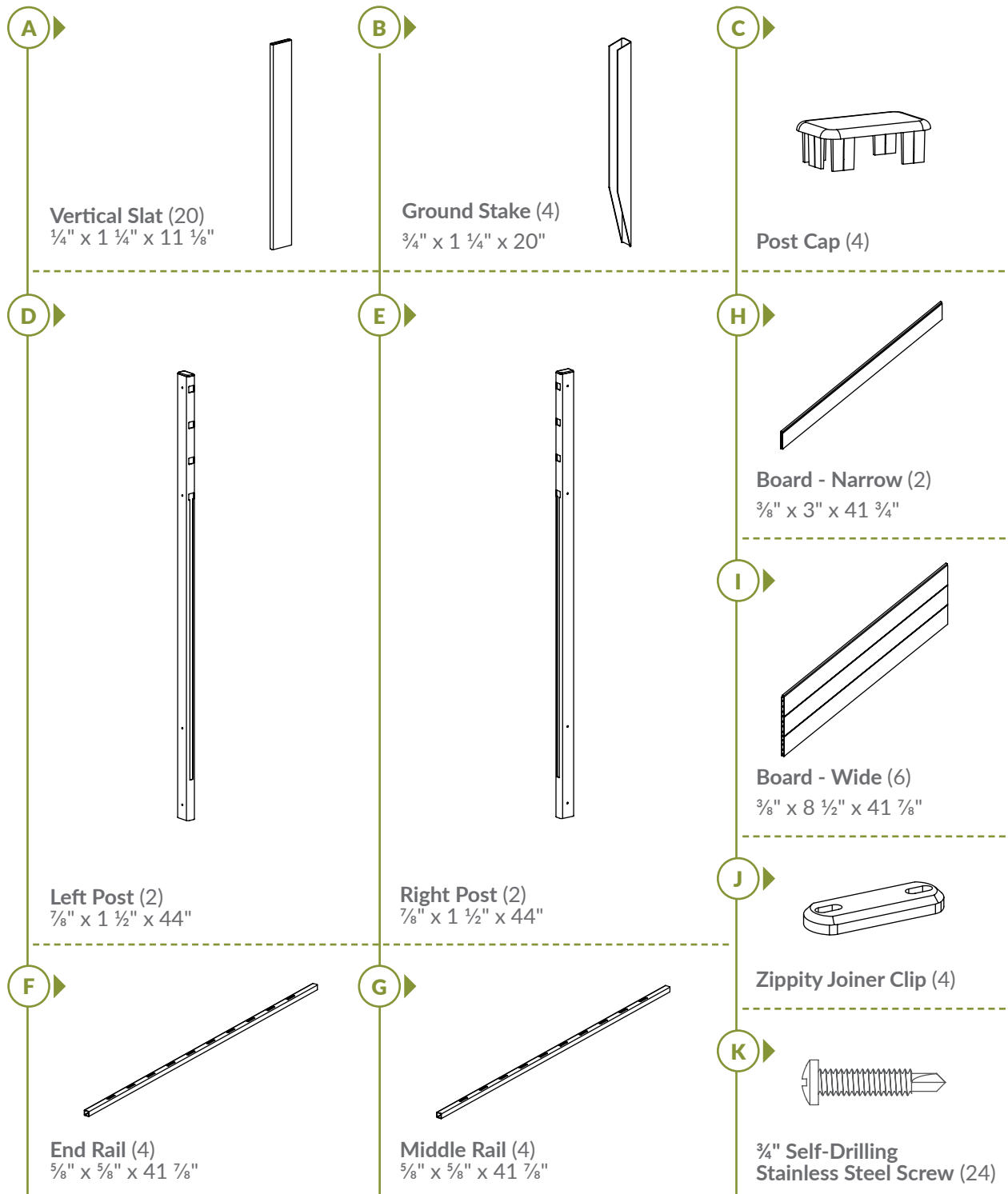
## NEED TO RETURN?

If for some reason you need to return this product, please allow us to help resolve your issues first. If you still decide to return the product, **you will need to initiate the return from the company you originally purchased from.**

## Detailed Product Dimensions & Specifications



## STEP 1: LAY OUT MATERIALS

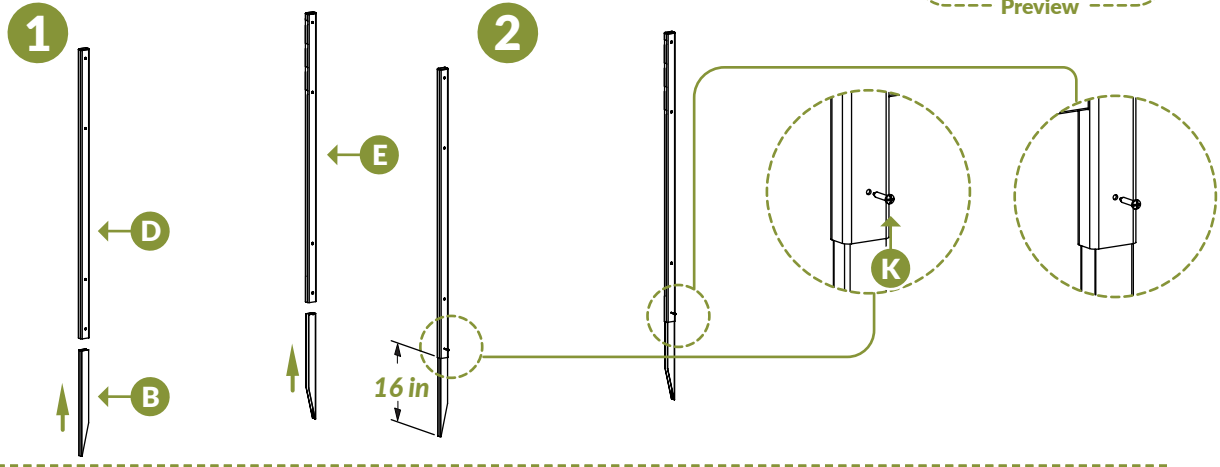


## STEP 2: INSTALL GROUND STAKES

### STEP 2.1

1. Insert (2) Ground Stakes (B) up the bottom of the Left Post (D) and the Right Post (E).

2. Slide the ground stakes until there are 16" of the stakes exposed past the bottom of the posts as shown. Drive (2)  $\frac{3}{4}$ " Self-Drilling Stainless Steel Screw (K) into the lowest pre-drilled holes on the posts.



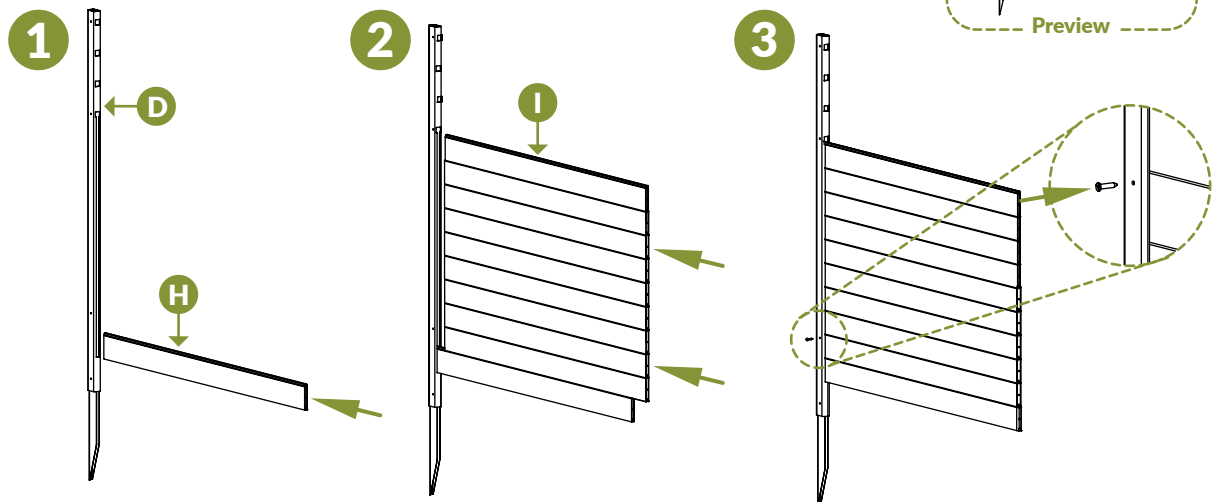
## STEP 3: INSTALL BOARDS

### STEP 3.1

1. Layout (1) the left post and slide a single Board - Narrow (H) into the bottom of the cut grooves in the post.

2. Insert (3) Board - Wide (I) into the slot in the post.

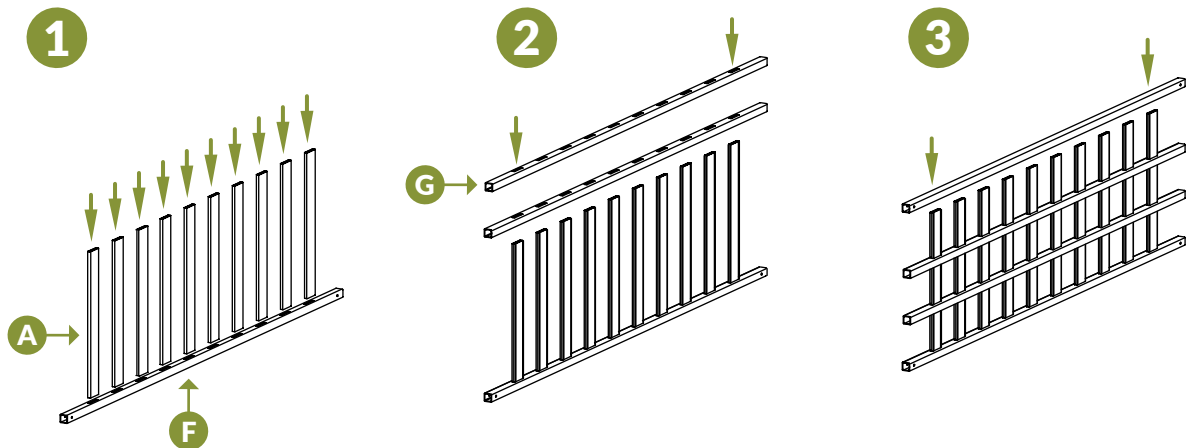
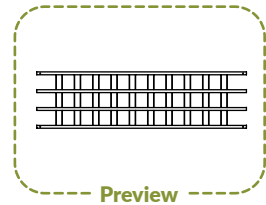
3. Drive (1)  $\frac{3}{4}$ " self-drilling stainless steel screws into the second lowest pre-drilled hole on the left post.



## STEP 4: ASSEMBLE LATTICE TOP

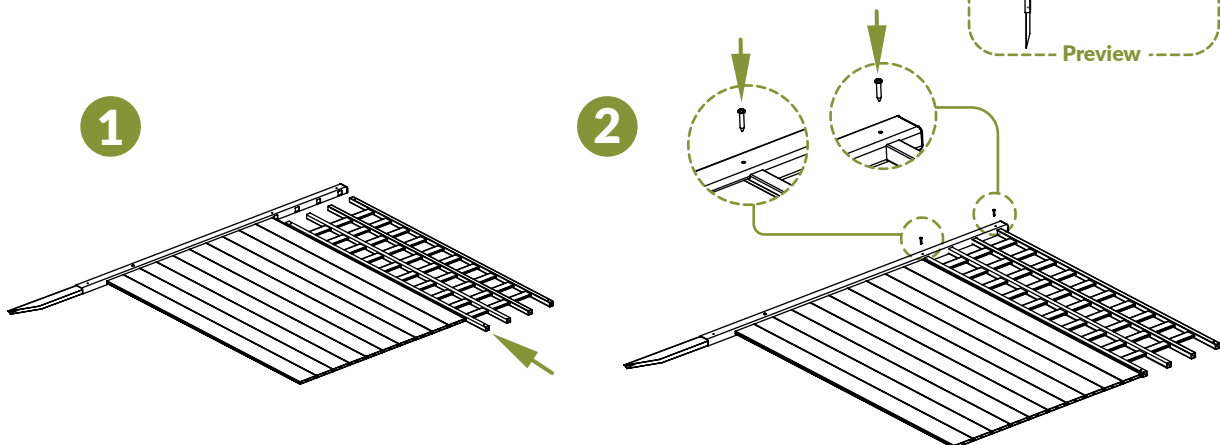
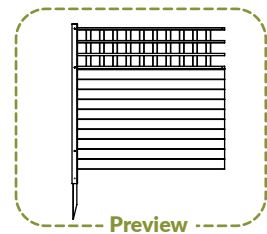
- STEP 4.1** ▶ 1. Lay out (1) End Rail (**F**) on a flat surface. Insert (10) Vertical Slats (**A**) into the routed holes in the rail.
2. Slide (2) Middle Rails (**G**) down over the vertical slats.
3. Insert (1) end rail over the vertical slats.

**NOTE:** Middle rails will have picket holes on both sides.



## STEP 5: ASSEMBLE PANELS

- STEP 5.1** ▶ 1. Carefully slide the lattice top into the routed holes in the left post.
2. Drive (2)  $\frac{3}{4}$ " self-drilling stainless steel screws into the pre-drilled holes in the post.

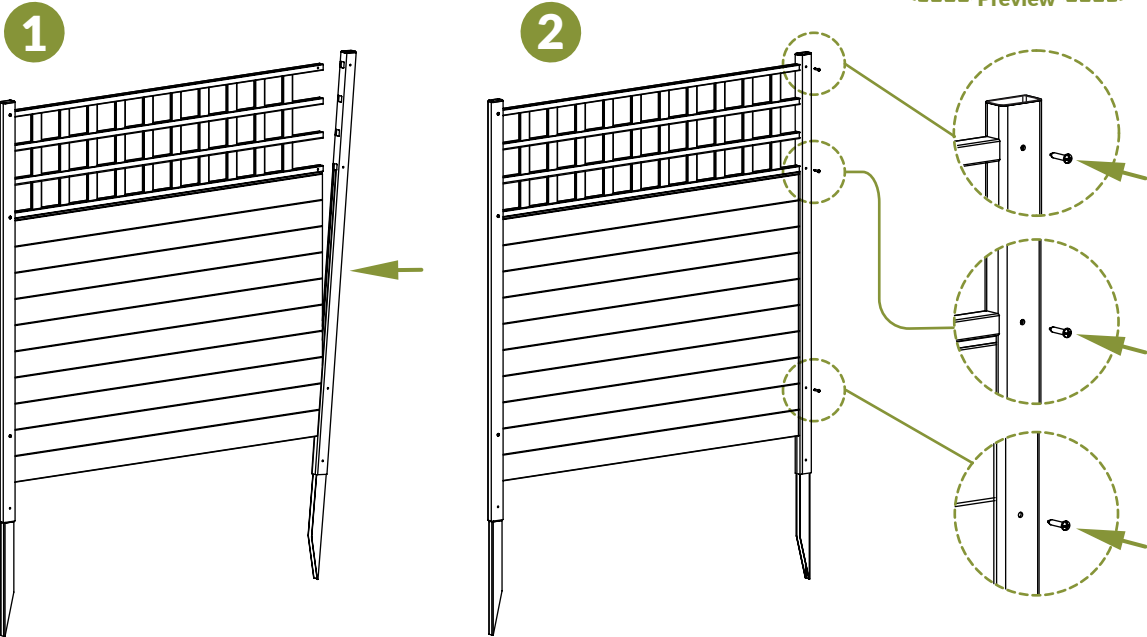
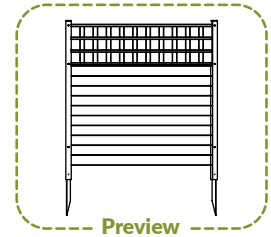


**STEP 5.2**

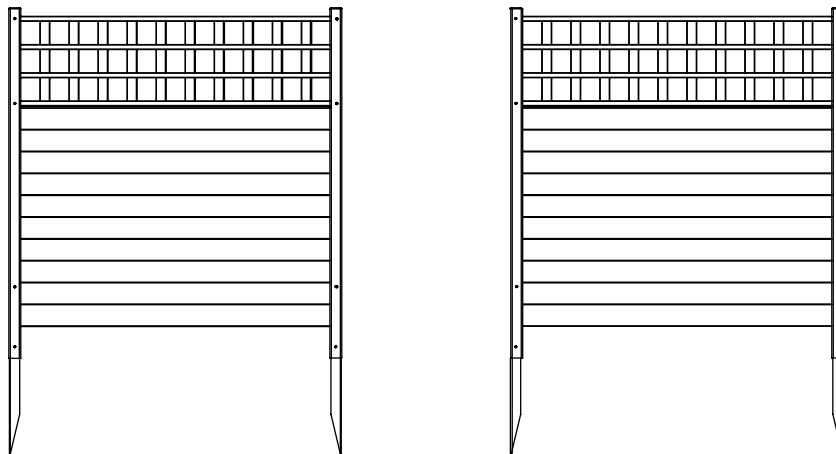
1. Starting from the bottom of the right post, slide the routed holes of the post over the boards and rails.

2. Drive (3)  $\frac{3}{4}$ " self-drilling stainless steel screws into the pre-drilled holes in the right post.

**NOTE:** Ensure the boards and rails are inserted all the way into the right post before driving the screws in.

**STEP 6: ASSEMBLE THE SECOND PANEL****STEP 6.1**

Repeat steps 2-5 in order to assemble the second panel.



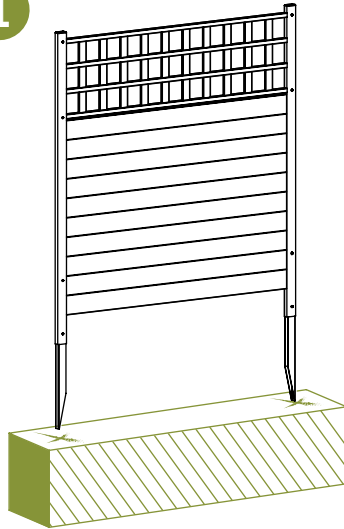
## STEP 7: INSTALL PANEL INTO GROUND

### STEP 7.1 ▶

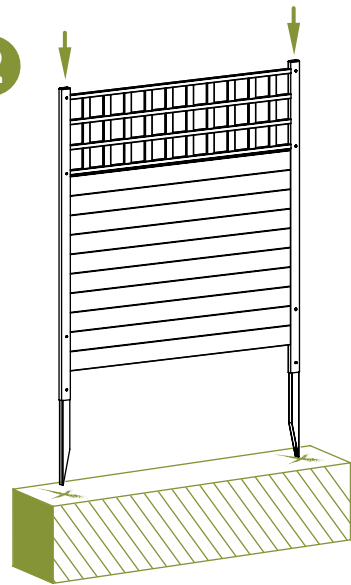
1. Move the panel to its destination and identify the location of the posts.

2. Attempt to push the panel into the ground as illustrated.

1



2



### STEP 7.2 ▶

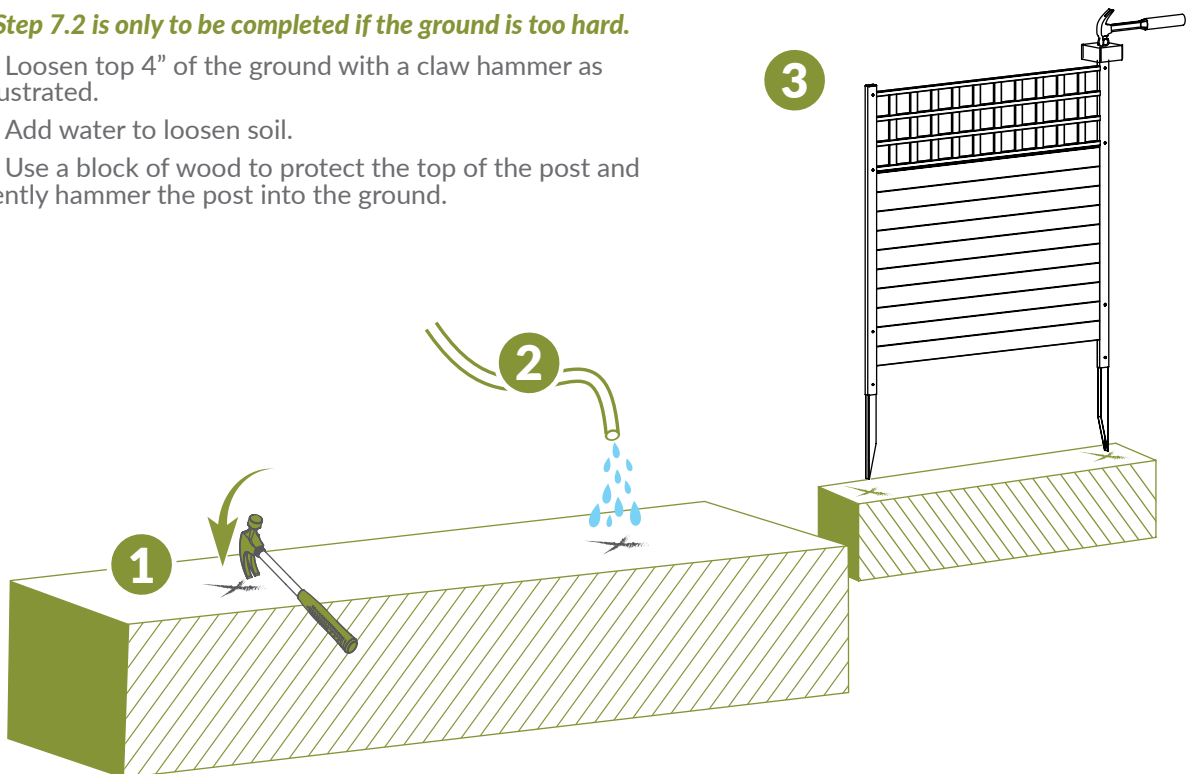
▶ *Step 7.2 is only to be completed if the ground is too hard.*

1. Loosen top 4" of the ground with a claw hammer as illustrated.

2. Add water to loosen soil.

3. Use a block of wood to protect the top of the post and gently hammer the post into the ground.

3

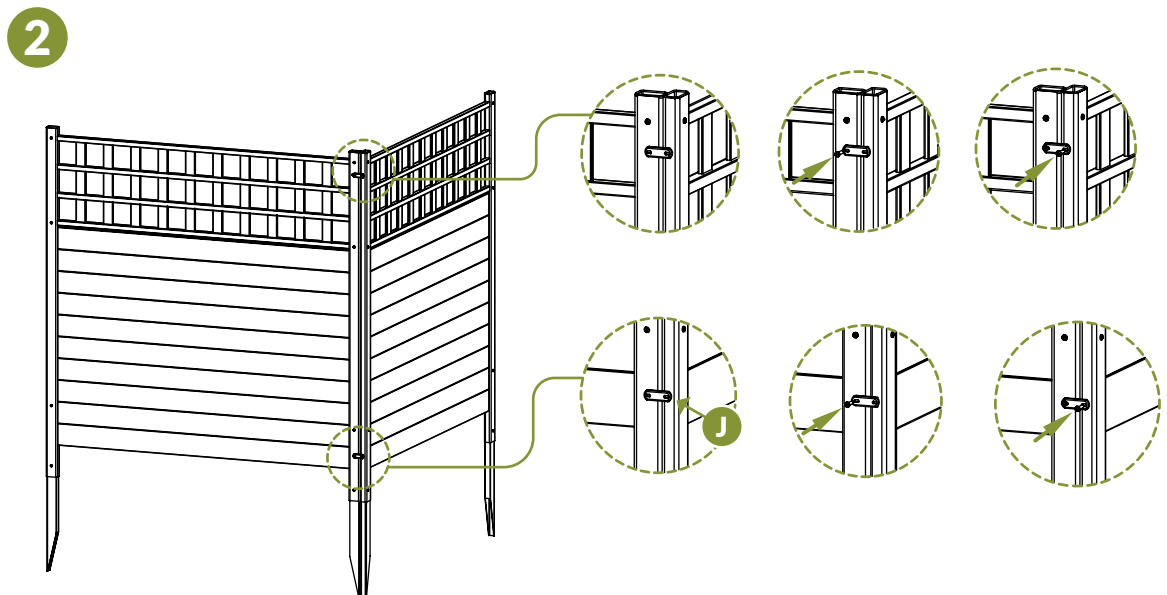
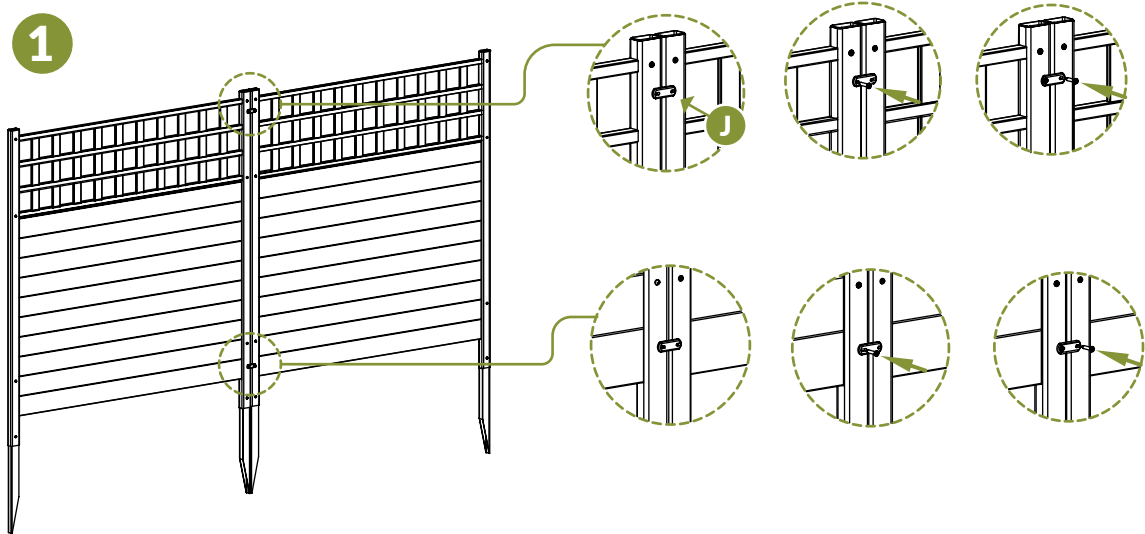




## STEP 8: CONNECTING THE PANELS

### STEP 8.1 ▶

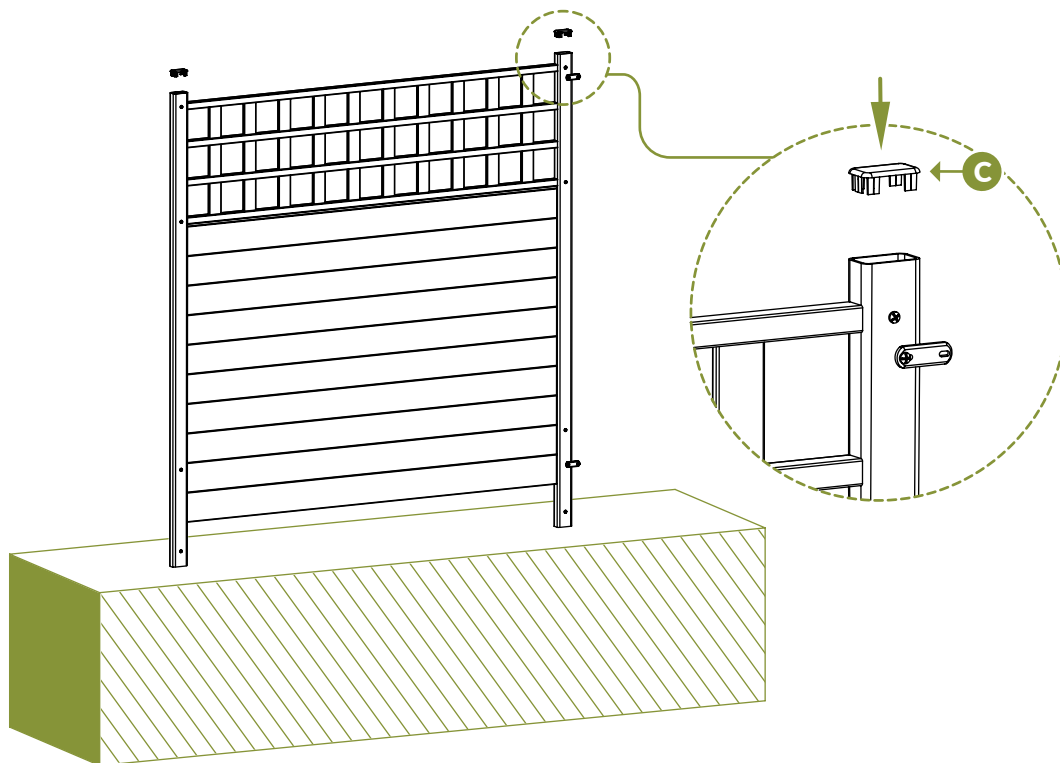
1. Straight Line Application: Install the Zippity Joiner Clips (J) as shown below.
2. Corner Application: Install the Zippity Joiner Clips (J) as shown below.



## STEP 9: INSTALL POST CAPS

### STEP 9.1 ▶

▶ Insert the Post Caps (C) over the tops of the posts.





# ZIPPITY

*Easy Does It!*



6935 Reames Rd. Ste. K.  
Charlotte, NC 28216



[support@zippity-outdoor.com](mailto:support@zippity-outdoor.com)

704-892-5222  
877-234-6196



[WWW.ZIPPITY-OUTDOOR.COM](http://WWW.ZIPPITY-OUTDOOR.COM)